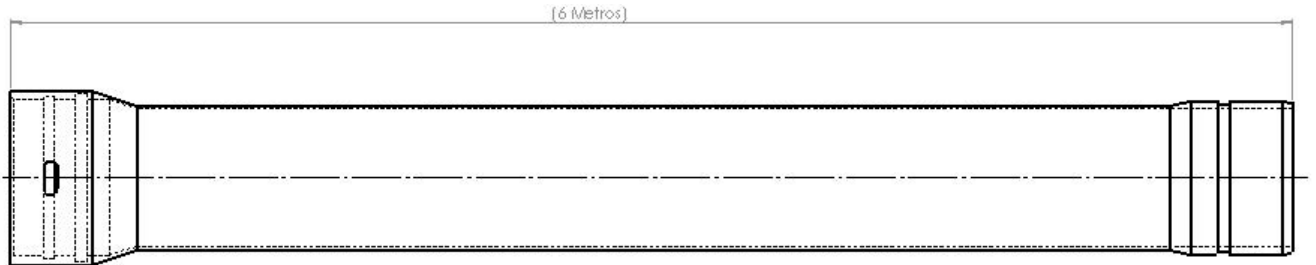


# TUBO IRRIGA

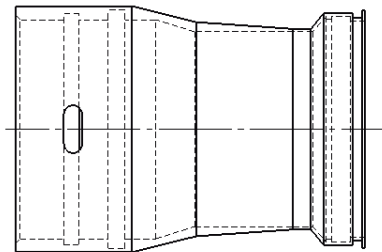
## TUBO, ADAPTADORES E CONEXÕES



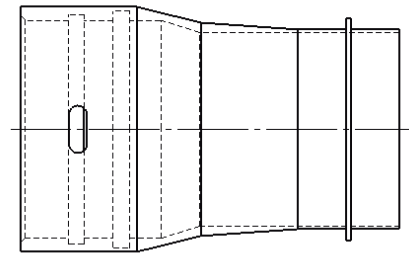
Dados técnicos

Diâmetro: 6", 8" e 10".

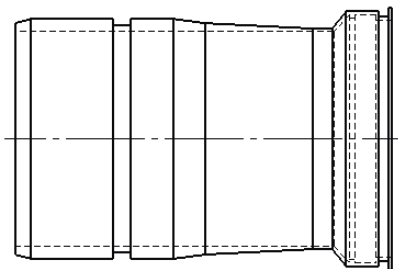
Classe de pressão: 16Kgf/cm<sup>2</sup> (160mca).



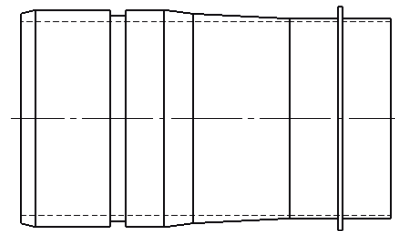
Adaptador BFiBAI



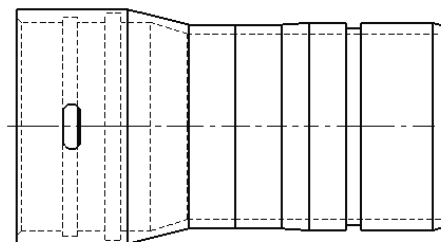
Adaptador BFiPAI



Adaptador PFiBAI

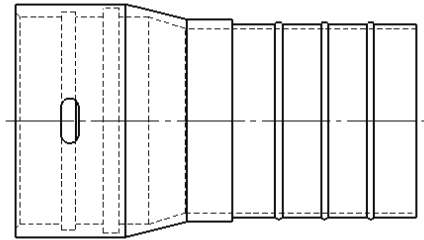


Adaptador PFiPAI

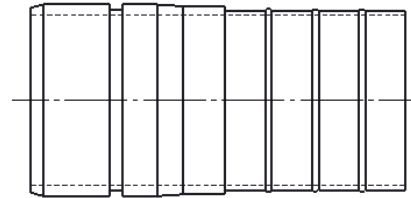


Adaptador PB

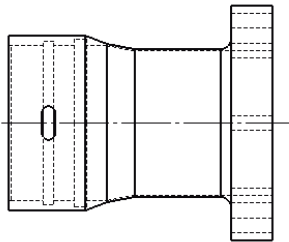




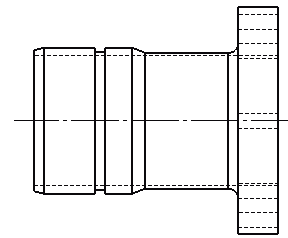
Bolsa para mangueira



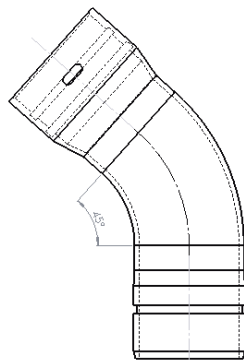
Ponta para mangueira



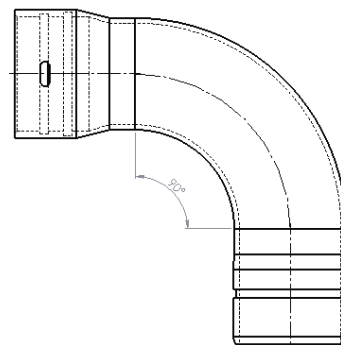
Extremidade BF



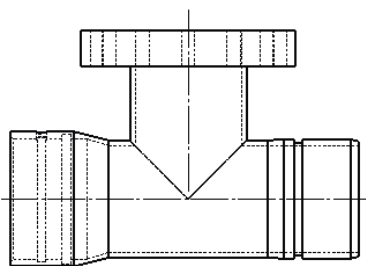
Extremidade PF



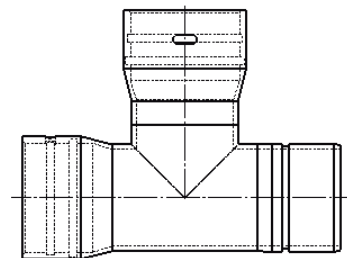
Curva 45° PBAT



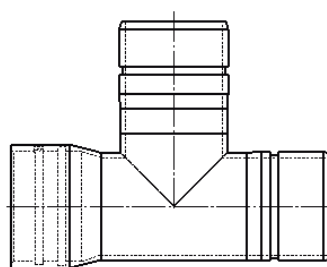
Curva 90° PBAT



TE BPF



TE BBP



TE BPP

